

PLOT 11

OXBORROW CLOSE  
UPTON, POOLE



East Elevation



North Elevation

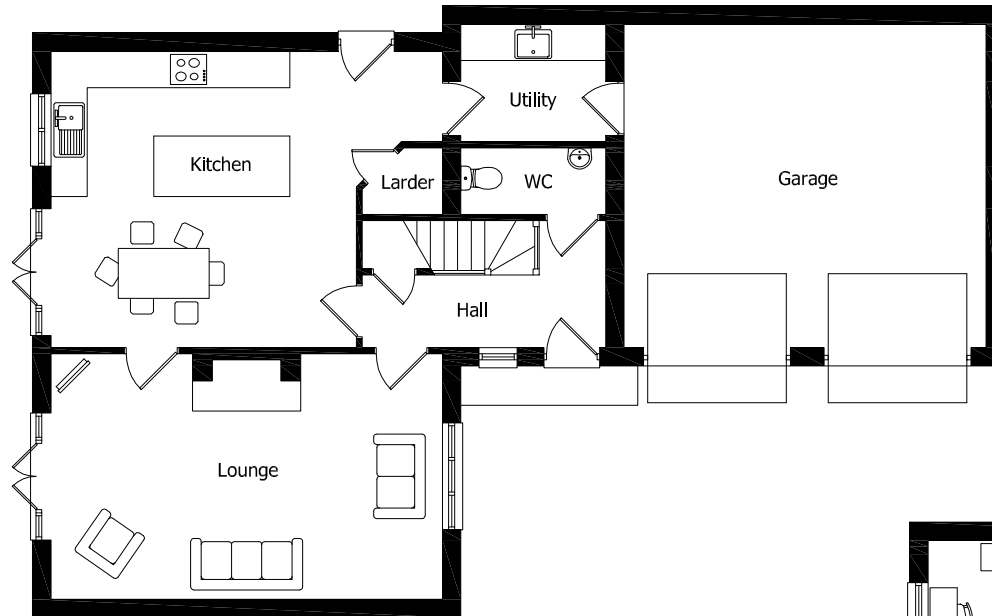


South Elevation



West Elevation

PLOT 11  
 OXBORROW CLOSE  
 UPTON, POOLE



Ground Floor Accommodation

Lounge	4.0m x 6.4m	(13ft 1" x 20ft 11")
Kitchen	4.8m x 5.0m	(15ft 8" x 16ft 4")
Utility	1.9m x 2.4m	(6ft 2" x 7ft 10")
Larder	1.1m x 1.3m	(3ft 7" x 4ft 3")
WC	1.1m x 2.4m	(3ft 7" x 7ft 10")
Garage	5.3m x 5.9m	(17ft 4" x 19ft 4")

First Floor Accommodation

Bed 1	4.2m x 5.1m	(13ft 9" x 16ft 8")
En-Suite	1.4m x 2.8m	(4ft 7" x 9ft 2")
Bed 2	4.0m x 2.9m	(13ft 1" x 9ft 6")
Bed 3	2.6m x 3.9m	(8ft 6" x 12ft 9")
Bed 4	4.0m x 2.7m	(13ft 1" x 8ft 10")
Bathroom	2.1m x 3.9m	(6ft 10" x 12ft 9")

