

PLOT 10

OXBORROW CLOSE
UPTON, POOLE



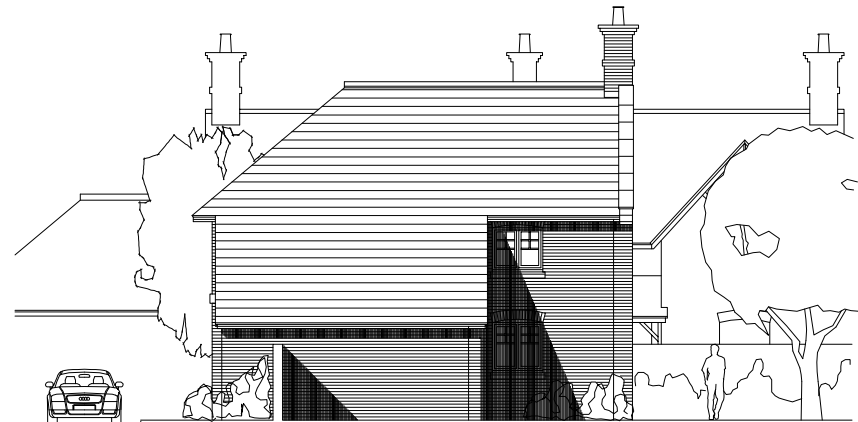
South Elevation



East Elevation

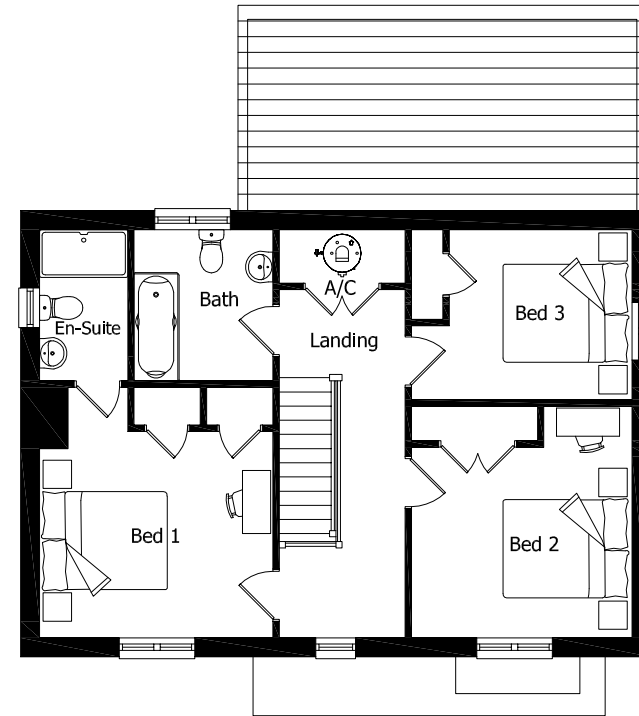
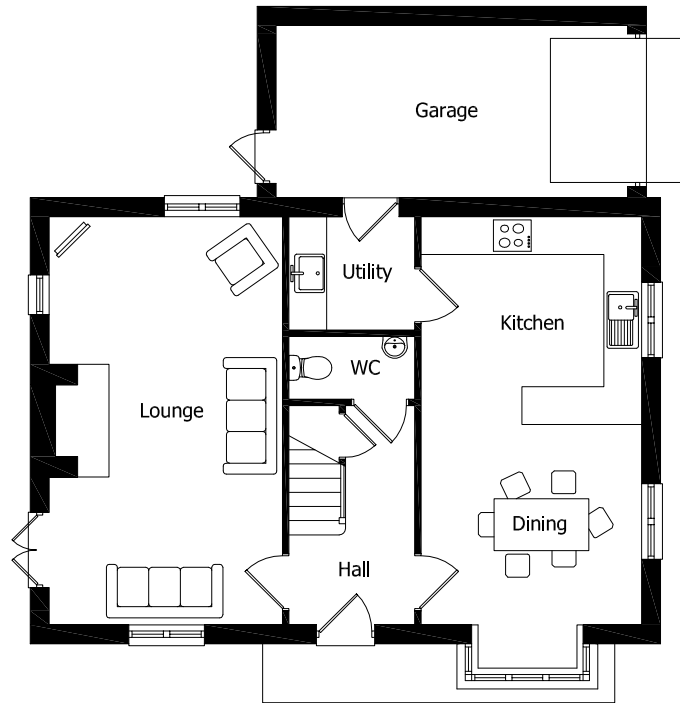


West Elevation



North Elevation

PLOT 10
 OXBORROW CLOSE
 UPTON, POOLE



Ground Floor Accommodation

Lounge	6.4m x 3.7m	(20ft 11" x 12ft 1")
Kitchen	3.3m x 3.5m	(10ft 9" x 11ft 5")
Dining	3.1m x 3.5m	(10ft 2" x 11ft 5")
Utility	1.8m x 2.0m	(5ft 10" x 6ft 6")
WC	1.0m x 2.0m	(3ft 3" x 6ft 6")
Garage	2.7m x 5.5m	(8ft 10" x 18ft 0")

First Floor Accommodation

Bed 1	3.2m x 3.7m	(10ft 5" x 12ft 1")
En-Suite	2.4m x 1.4m	(7ft 10" x 4ft 7")
Bed 2	3.6m x 3.5m	(11ft 9" x 11ft 5")
Bed 3	2.7m x 2.9m	(8ft 10" x 9ft 6")
Bathroom	2.4m x 2.2m	(7ft 10" x 7ft 2")